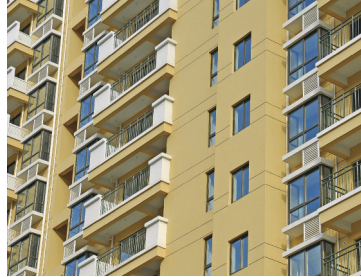


Protect & Maintain

WATER & STAIN REPELLENTS | CORROSION CONTROL



Our deep penetrating sealer treatments are designed to protect and maintain existing as well as new concrete and masonry structures. These breathable products chemically bond with the substrate reducing the harmful affects of freeze-thaw cycles, de-icing chemicals, acid rain and wind-driven rain greatly reducing corrosion of reinforcing steel, spalling, cracking and delamination of concrete, efflorescence, staining and mildew growth. The original appearance is maintained while sealing and protecting, reducing maintenance and cleaning costs. Our wide selection of easy-to-use products enable you to select the optimal product for a variety of applications and substrates.

Water Repellents

Certi-Vex Penseal 244 100

Ideal for high traffic areas, bridge and parking decks. DOT Approved.

Deep Penetrating – Low Temperature Application – Maximum Protection

Certi-Vex Penseal 244 FD

Ideal for tight construction schedules, bridge and parking decks.

Fast Drying – Low Temperature Application

Certi-Vex Penseal 244 40

Ideal for bridge and parking decks, building façades and balconies. DOT Approved.

Solvent Base – Low Temperature Application – Best Protection

Powerseal 40

Ideal for bridge and parking decks, building façades and balconies. DOT Approved.

Water Base – Low Odor – Environmentally Friendly – Best Protection

Powerseal 20

Ideal for commercial and institutional building façades, balconies, walkways, driveways and parking decks.

Water Base – Low Odor – Value Priced – Better Protection

Powerseal Weatherproof

Ideal for residential walkways, driveways and patios.

Water Base – Economical – Good Protection

Powerseal SS Plus

Ideal protection from freeze/thaw, water and chloride penetration.

Water-Base Blend – Cost Effective – Good Protection

Stain & Water Repellents

Certi-Vex Penseal 244 O/W

Ideal for parking decks, parking areas, shipping docks, aprons and building façades. Keeps surfaces clean and reduces maintenance.

Repels Oil, Grease & Food Stains – High Solids – Excellent Protection

Powerseal Stain Guard

Ideal for walkways, driveways and patios.

Natural & Colored Surfaces – Protection from Common Stains

Certi-Vex Penseal 244 100 Plus

Ideal for parking decks and parking areas High Traffic Areas – Keeps Surfaces Clean

Special Applications

Certi-Vex Penseal CT

Ideal for reinforced concrete bridge and parking decks, building façades, balconies, beams, columns, pier caps and abutments.

Advanced Surface Applied Migratory Corrosion

Inhibitor Treatment – Deep Penetrating

StarSeal Consolidator

Ideal for strengthening stone and weakened mortar. Stone & Masonry Surface Strengthener – Quick Drying

Benefits

- Increase Service Life
- Lower Maintenance & Restoration Costs
- Improved Aesthetics
- Increased Durability
- Breathable Technology

Substrates Protected

- Reinforced Concrete
- Brick
- Natural Stone
- Split Face Block
- Unpainted Stucco
- Concrete Masonry Units
- Concrete Pavers
- Architectural Concrete

Applications

Commercial, Residential & Institutional

- Building Facades
- Balconies
- Walkways, Driveways & Patios
- Parking Areas, Shipping Docks & Aprons

Infrastructure & Transportation

- Bridge & Parking Decks
- Beams, Columns, Pier Caps & Abutments
- Ramps & Barriers
- Sound Walls



Concrete solutions for architects, engineers and builders since 1974

888-839-2661 | sales@vexcon.com | 7240 State Road • Philadelphia, PA 19135 | vexcon.com

Products for Protecting & Maintaining

| Vexcon Product | Chemistry | VOC Content | Solids | Typical Coverage Rate | HORIZONTAL | VERTICAL | Reinforced Concrete | Brick | Natural Stone | Split-Face Block | Un-Painted CMU | Concrete Stucco | Concrete Pavers | Architectural Concrete |
|---|------------------------------------|-------------|--------|-----------------------|------------|----------|---------------------|-------|---------------|------------------|----------------|-----------------|-----------------|------------------------|
| PENETRATING SEALERS - WATER REPELLENTS | | | | | | | | | | | | | | |
| Certi-Vex Penseal 244 100 | | | | | | | | | | | | | | |
| | Silane - Solvent Free | <250 | 100% | 250 - 400 | • | • | • | | | | | | | • |
| Certi-Vex Penseal 244 FD | | | | | | | | | | | | | | |
| | Silane - VOC Exempt Solvent | <250 | >40% | 200 - 400 | • | • | | | | | | | | • |
| Certi-Vex Penseal 244 40 | | | | | | | | | | | | | | |
| | Silane - Solvent | <600 | 40% | 100 - 400 | • | • | • | • | | • | | | | • |
| Certi-Vex Penseal 244 40 AIM | | | | | | | | | | | | | | |
| | Silane - VOC Exempt Solvent | <250 | 40% | 100 - 400 | • | • | • | • | | • | | | | • |
| Powerseal 40 | | | | | | | | | | | | | | |
| | Silane Emulsion | <100 | 40% | 100 - 400 | • | • | • | • | | • | | | | • |
| Powerseal 20 | | | | | | | | | | | | | | |
| | Silane Emulsion | <100 | 20% | 100 - 250 | • | • | • | • | | • | | | • | • |
| Powerseal Weatherproof 500 | | | | | | | | | | | | | | |
| | Silane Emulsion | <100 | 10% | 100 - 200 | • | • | | | | | | | | • |
| Powerseal Weatherproof 100 | | | | | | | | | | | | | | |
| | Silane Emulsion | <100 | 7% | 100 - 200 | • | • | | | | | | | | • |
| Powerseal SS Plus | | | | | | | | | | | | | | |
| | Siloxane/Silane Emulsion | <100 | 12% | 50 - 200 | • | • | • | • | • | • | | | • | |
| Certi-Vex SS Plus | | | | | | | | | | | | | | |
| | Siloxane/Silane Solvent | <600 | 12% | 50 - 200 | • | • | • | • | • | • | | | • | |
| PENETRATING SEALERS - STAIN & WATER REPELLENTS | | | | | | | | | | | | | | |
| Powerseal Stain Guard | | | | | | | | | | | | | | |
| | Proprietary | <100 | | 50 - 1000 | • | • | | • | | | | | • | • |
| Certi-Vex Penseal 244 O/W | | | | | | | | | | | | | | |
| | Silane - Oliophobic | <600 | >35% | 100 - 600 | • | • | • | • | | | | | • | • |
| Certi-Vex Penseal 244 O/W AIM | | | | | | | | | | | | | | |
| | Silane - VOC Exempt Solvent | <250 | >35% | 100 - 600 | • | • | • | • | | | | | • | • |
| Certi-Vex Penseal 244 100 Plus | | | | | | | | | | | | | | |
| | Silane - Oliophobic - Solvent Free | <250 | 100% | 250 - 400 | • | • | • | | | | | | | • |
| PENETRATING SEALERS - SPECIAL APPLICATIONS | | | | | | | | | | | | | | |
| Certi-Vex Penseal CT | | | | | | | | | | | | | | |
| | Proprietary | <250 | | 175 - 225 | • | • | • | | | | | | | • |
| StarSeal Consolidator | | | | | | | | | | | | | | |
| | Proprietary | 0 | | 150 - 200 | • | | | • | | | | | | |

Customer Service & Technical Support

Get the answers and information you need fast from our experienced sales, customer service and technical support professionals. From requesting free product samples and literature, order status, and delivery information, to product recommendations, specification support and help answering your on-site questions, we're here for you.

Training & Field Support

We develop flexible and customized training programs to enhance your product and application knowledge.

We also provide job site support to make product recommendations and to ensure successful installation.

Contact Us

Vexcon Chemicals, Inc.
7240 State Road, Philadelphia, PA 19135
Phone: 888-839-2661, Fax: 215-332-9997
sales@vexcon.com
customerservice@vexcon.com
techservice@vexcon.com

